

**Marblehead Little Theatre presents**

# MOTHER of the MAID

by Jane  
Anderson

Produced by Elaine Leahy  
Directed by Hannah Schuurman

**April 5-14, 2024**



"Mother of the Maid" is presented by arrangement with  
Concord Theatricals on behalf of Samuel French Inc.  
[www.concordtheatricals.com](http://www.concordtheatricals.com)

## Director's Note

Welcome, dear audience, to Marblehead Little Theatre's production of **Mother of the Maid**. I am blessed with the opportunity to bring this poignant and captivating story to life. This piece offers a deeply human exploration of love, sacrifice, and the complexities of parenthood set against the backdrop of history, told in a refreshingly authentic way. Intended to be anything but a haughty historical play, this is a vibrant exploration of family dynamics, humor, and the messy navigation of motherhood and faith.

As women's voices and experiences doggedly grow more valued and recognized, Isabelle's story holds particular relevance. Her perspective transports us to a time of turmoil and uncertainty, where societal expectations clash with maternal instinct. The bonds of family are tested in the face of extraordinary circumstances as Isabelle wrestles with her own conviction under the pressures of religious fervor and political upheaval. Her story resonates powerfully in our contemporary landscape, where parents continue to grapple with the challenges of nurturing and protecting their children amidst a complex and often harsh reality. Her unwavering devotion to Joan, her struggles with doubt and fear, and her eventual acceptance of her daughter's destiny are universal themes that speak to the depths of the human experience. Although the role of women is still often marginalized, **Mother of the Maid** serves as a timely reminder of the strength, resilience, and inherent dignity of motherhood.

As we embark together, I am deeply grateful for the opportunity to collaborate with a talented and dedicated team of artists. Together, we have striven to honor Jane Anderson's vision, for whom I also extend my heartfelt thanks. Her insightful exploration of Isabelle Arc's story has provided us with the rich tapestry upon which we weave our own artistic interpretation, and have developed a performance that we hope will resonate with audiences long after the final curtain falls.

Lastly, I express my deepest appreciation to you, our audience, for joining us on this journey. Your presence here today is a testament to the enduring power of storytelling and the shared human experience. It is my sincere hope that **Mother of the Maid** will touch your hearts, provoke your thoughts, and leave you with a renewed sense of awe for the strength and resilience of the human spirit. I invite you now to join Isabelle and her family on their journey of laughter, tears, and self-discovery. Enjoy!

Hannah Schuurman, Director

# Mother of the Maid

by Jane Anderson

**Original New York Production by The Public Theater**

**Oskar Eustis, Artistic Director**

**Patrick Willingham, Executive Director**

**Mother of the Maid received its world premiere by Shakespeare & Company, Lenox, MA, 2015 and was developed in part at Berkshire Playwrights Lab. It was originally commissioned by Geffen Playhouse, Gilbert Cates, Producing Director; Randall Arney, Artistic Director; Ken Novice, Managing Director.**

## The Cast

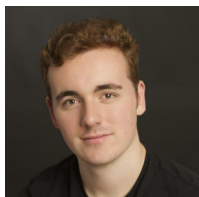
Miki Manting . . . . .	Isabelle Arc
Kaleigh Ryan . . . . .	Joan Arc
Cornelius Twohig . . . . .	Jacques Arc
Carl Jean-Baptiste . . . . .	Pierre Arc
Timothy Kenslea . . . . .	Father Gilbert
Leslie Rachelle Pierre . . . . .	Lady of the Court
Cole Brown . . . . .	Court Scribe
Matthew Doherty . . . . .	Prison Guard
Amelia Smith . . . . .	Monique/Joan Arc U/S

## Production Team

Produced by . . . . .	Elaine Leahy
Consulting Producer . . . . .	Erin Pelikhov
Directed and Choreographed by . . . . .	Hannah Schuurman
Set Design . . . . .	Greg Mancusi-Ungaro
Light Design . . . . .	Greg Mancusi-Ungaro
Costume Design . . . . .	Laura Dillon
Sound Design/Operator . . . . .	Susannah Burch
Stage Manager . . . . .	Katherine Haley
Technical Director . . . . .	Andrew Barnett
Set Construction & Painting . . . . .	Lou Schoenthal, Larry Lowe
Props and Set Dressing . . . . .	Lynn Turner

# Biographies

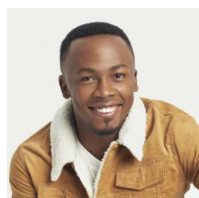
## The Cast



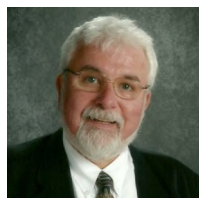
**Cole Brown (Court Scribe)** began acting his sophomore year of high school. When he graduated, he went to Dean College for a degree in theatre. After two years, he decided that he wanted to try his luck in the professional world, auditioning for every project he could find. This will be his first performance at MLT, with his most recent theatrical performance being an ensemble member for “Mr. Burns, A Post-Electric Play.” Other notable roles Cole has played were Colonel Mustard in “Clue,” Slim in “Of Mice and Men,” and Grandfather in “The Dining Room.”



**Matt Doherty (Prison Guard)** is excited to be a part of his first MLT production. He received his Bachelor of Arts from SUNY New Paltz, and has since worked as an actor and dramaturg for organizations like the Jewish Play Project and the Utah Shakespeare Festival. He has portrayed notable characters such as Friar Lawrence in “Romeo and Juliet,” Fayette in “Waiting for Lefty,” and Dennis Shepherd in “The Laramie Project.”



**Carl Jean-Baptiste (Pierre Arc)** Carl is very excited to make his theater debut in “Mother of the Maid” by Jane Anderson. He’s been acting for the past three years and you will recognize him in different commercials, short films and featured films. When he isn’t on stage, Carl enjoys spending time with family and friends doing different activities.



**Timothy Kenslea (Fr. Gilbert)** Tim’s last MLT appearance, as the teacher Hugh in Brian Friel’s “Translations,” earned him a 2022 EACT/DASH Best Supporting Performer award. He also appeared at MLT with Mugford Street Players in “Death of a Salesman” (Ben Loman) and “Our Town.” At the Footlight Club in Jamaica Plain, he played Eben Stanhope in Susan Glaspell’s “Alison’s House” and Dr. Chumley in “Harvey.” A Salem resident and retired high school History Teacher, Tim is the author of *The Sedgwicks in Love* (UPNE, 2006).



**Miki Manting (Isabelle Arc)** Miki is excited to make her scripted theater debut. A seasoned improviser, Miki applies those skills to creating one or two act plays in comedic, theatrical and Musical Improv formats where she does not have to memorize a thing! During the Pandemic Miki received global recognition as a pioneer in virtual improvisation, When all live theater went dark, her vision connected internationally famous improv artist-instructors to a world of quarantined improvisers, [www.vintageimprov.org](http://www.vintageimprov.org) Miki wants to thank her son Zander whose kindness and support are much appreciated.



**Leslie Rachele Pierre (Lady of the Court)** has performed a lead role in Sacrife and Malediction films. In 2023 she graduated from The American Academy of Dramatic Arts. She has performed as Jessica in "Sunday on the Rocks," Mary in "Final Placement," and OG Howland in "Men on Boats." This year she has been cast in "Amber Oak" TV Mini Series as "Butter Churning Lady."



**Kaleigh Ryan (Joan Arc)** is ecstatic to be making her MLT debut. Kaleigh earned a theatre degree from Suffolk University in 2020 and is a proud staff member of the Barr Hill Players: Acting & Wilderness Survival Retreat for the Warrior Artist. (Instagram: [@barrhillplayers](https://www.instagram.com/barrhillplayers)) Recent credits include #7 in "The Wolves," Mel in "One Slight Hitch," Megan in "Puffs," and Black Stache in "Peter and the Star Catcher."



**Amelia Smith (Monique, u/s Joan)** majored in Theatre Arts at Gordon College, and has spent the last decade performing, directing, and teaching theatre in various venues around the North Shore. She last appeared at MLT in "Tuck Everlasting" (ensemble), and is excited to be returning for this new take on one of her favorite historical figures. Her favorite past roles include Malcolm in "Macbeth," Cecily in "The Importance of Being Earnest," and Laura in "The Glass Menagerie."



**Cornelius Twohig (Jaques Arc)** Cornelius is excited to take the stage for the first time at MLT. New to the North Shore, Cornelius has been in multiple productions in the Washington, D.C. area, most recently as Banquo in "Macbeth" with the Port Tobacco Players. He has also

appeared in many TV and film productions filmed in the D.C. area and hopes to do the same here. Thanks to Hannah for casting me in this interesting piece, and a heartfelt thanks to my friend and line coach, Sue.

## **Production Team**

**Andrew Barnett** (Technical Director) followed his children's interest into the realm of theatre with the design and construction of the set for the Marblehead Middle School production of *Fiddler on the Roof* in 1992. Since then, he has built numerous sets for MLT and for other venues including Rebel Shakespeare Company, Endicott College, Gordon College, Opera Boston, Gloucester Stage, Roxbury Center for the Arts. Andy has been a member of the production team of Watertown based Revels, Inc., for 18 years building sets for Summer Revels, *Riversing* and Christmas Revels shows. His work is dedicated to his wife Jessica, sons Nick and Jeremy, and grandson Jacob who make it all possible, and to Marblehead Little Theater for all ages.

**Laura Dillon (Costume Designer)** is thrilled to be working with this talented cast and crew. She grew up in the Republic of the Marshall Islands and has also lived in Hawaii and Japan. She originally moved to Massachusetts to attend college where she specialized in 17th and 18th century Literature, Celtic Archaeology and other forms of not making money. She further honed this last skill while studying medieval labor law in law school. She has costumed many shows including "A Gentleman's Guide to Love and Murder," "The Great Gatsby," "Plaza Suite," *Tuck Everlasting*," "Pirates Of Penzance," "Young Frankenstein," and "Recovery," (Marblehead Little Theatre), "The Importance of Being Ernestine," "Romeo and Juliet," "Arcadia," "Sense and Sensibility" (Castle Hill), "Show Me Eternity" (Culture Lab and New York Theatre Festival), "Into the Woods," "Mamma Mia," "To Kill A Mockingbird," "Titanic" (Stage 284), "Sister Act" and "The Light In the Piazza" (NextDoor Theater). She lives in Lynnfield with her husband and African Grey parrot and often visits her children in NYC.

**Katherine Haley (Stage Manager)** is excited to be the stage manager for this production of "Mother of the Maid." Katherine is an undergraduate student in Theatre Arts and Christian Ministries. Her past stage-managing credits include "Little Women" and "The Claim." She is passionate about holding truth in tension and loves working on shows that explore the consequences of those tensions. She hopes to pursue a career in technical

theatre post-graduation, specifically in set construction and stage management. Katherine is from Western Maine, and when she is not working in the theatre, she enjoys camping, solo traveling, painting, and gardening.

**Elaine Leahy (Producer)** This is Elaine's debut as Producer. She so enjoys being part of the MLT organization and the magic of theater. She previously co-produced "Gershwin & Porter" and worked on publicity, props and house on the production of "Party." Elaine has a MA in Strategic Communication and first got involved in the theater from her interest in marketing shows. She thanks Erin Pelikhov, Andy Barnett, Dayle Persons, and Greg Mancusi-Ungaro for sharing their production knowledge with her as well as Trudi Olivetti for the opportunity to work on this fantastic show with this talented cast and crew.

**Greg Mancusi-Ungaro (Lighting & Set Design)** has worked extensively at MLT, as well as at theatres from Providence to Gloucester. His recent MLT credits include "Tuck Everlasting," "Gypsy," "Plaza Suite," "Equivocation," and "Arsenic and Old Lace." He has earned multiple DASH award nominations, most recently winning the DASH award for lighting design for the MLT production of Brian Friel's "Translations," directed by Trudi Olivetti. He studied lighting with Joan Olsson, and has taught lighting design at the secondary and university levels, most recently as a member of the theatre faculty at Wheaton College in Norton, MA.

**Erin Pelikhov (Consulting Producer)** is happy to be back at MLT and assist Elaine with this show! Her MLT production credits include "Tuck Everlasting," "Translations," "Frozen Jr," "Shrek The Musical Jr," "From Silence" (stagehand), and performance credits include "The Great Gatsby," "Mamma Mia!," and "Billy Elliot the Musical." She is the Graphic & Web Designer for the JCC of the North Shore and former Assistant Director of Forty Steps Dance in Nahant. Erin lives in Marblehead with her husband and twin fifth-graders, who love the theater as well. Erin hopes that everyone enjoys this production and congratulates Hannah, Elaine and the rest of the cast and crew on a job well done.

**Hannah Noel Schuurman (Director)** - Since receiving her BA in theater in 2020, Hannah has worked in many theaters around New England, including Lyric Stage Company of Boston and Trinity Repertory Theatre. Hannah proudly debuted at Marblehead Little Theater in "Translations," which, for her portrayal of Maire Chatach, received the DASH award for Best Actress

in a Supporting Role. She is blessed with the opportunity to direct “Mother of the Maid,” and has directed other notable shows such as “Beauty’s Daughter,” “White Guy on the Bus,” and “A Doll’s House Part II.” After the closing of “Mother of the Maid,” she will return to Boston for her seventh show at Lyric Stage Co., “Yellow Face.”

**Lynn Turner (Props)** is a retired Public Health Nurse. I am honored to be working with such an awe-inspiring cast and crew! My experience with MLT as Properties for “Equivocation” (DASH Nominee), “Tuck Everlasting” and “Arsenic and Old Lace.” Previous experience with the Arts includes many years of being a backstage Dance Mom/Grandmother and backstage seamstress at Paulette’s Dance School of Needham and Anthony William’s “Urban Nutcracker.” So many feathers and sequins! Supported CAST tour in London “Anna Christie” with set painting. Set Nurse for PBS’s 1995 documentary “You Don’t Have to Ride Jim Crow.”





**Marblehead Little Theatre**  
**12 School Street, Marblehead, MA 01945**  
**MLTLive.org**

MLT's Premier Restaurant Partner



123 Pleasant Street. Marblehead

**Special Thanks to Our Sponsors:**

**Performance Sponsors**

**Trudi Wallace Olivetti April 5-7 performances**  
**David and Melissa Foye April 12 performance**  
**Dayle Persons April 13 evening performance**

Restaurant Sponsor - The Beacon Restaurant  
Banquet Scene Sponsor - Shubie's Marketplace ,

**Thanks to**

**The Board of Marblehead Little Theatre**  
**for production and material assistance.**